

Versital

DESIGN LIBRARY AND LOOKBOOK



Versital CONTENTS



Our story
How it's made
Who we are
The making of
visit us

PROJECTS

Blossom & Wild
Botanist (Bristol)
Pine Marten
Dash Liverpool
Heavenly Desserts
The George
Central Oven & Shaker
Feya
Darley's
Manuka
The Red Lion
Cut & Craft
My Townhouse



Washroom edit
Tech specs

Cover image : Darley's

Versital

Our story

Versital is a hand crafted cultured marble made in the UK, in the heart of Lancashire since 1986.

A combination of polyester resin and natural minerals and fillers, finished with an engineered protective gel coat named SteriTouch. A huge range of exclusive formula's developed over decades of experience means you won't find the same finishes anywhere

Each piece of Versital is engineered, poured and finished by hand to give a unique true to life product. Like natural materials, every item has unique veining characteristics.

The inherent properties of Versital make it stain and waterproof, as well as a natural fire retardant. Our range of cultured marble products are all produced by skilled craftsmen in our Bolton workshop.



Who we are

The team



Managing Director – Peter Langley. Founder and Interior design master! Knows everything there is to know about Versital. Alongside Financial Director – Debra Langley Looks after the numbers



Production Manager – Carl Oliver (left)

Over 30 years experience making Versital – engineers all the projects and a stickler for the details alongside

Operations Director – Jaime Stockberger our workshop manager, product development, trainer and general improver of stuff!



Sales and Marketing – Gemma Stockberger (left)

Main point of contact for all commercial enquiries – adviser for how to use Versital and creator of beautiful projects alongside our

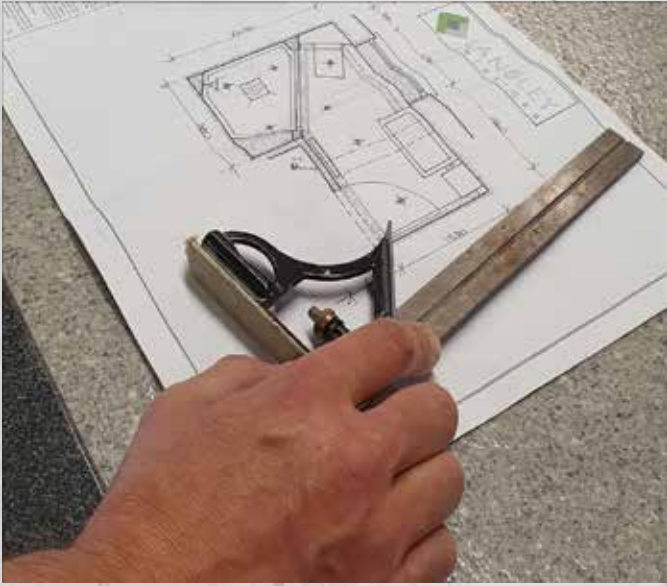
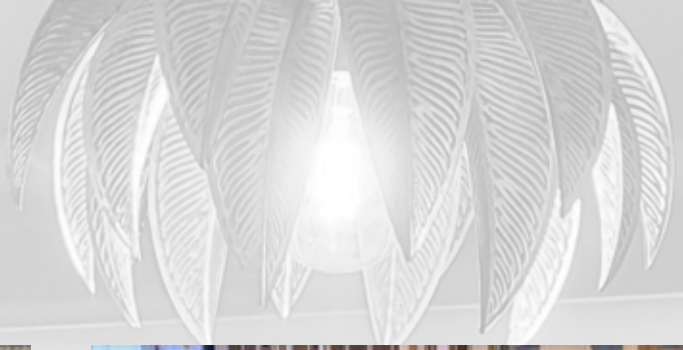
Sales and Admin Manager – Rebecca Shute

Looks after all order and estimates – your best friend in the office!



Versital

The making of

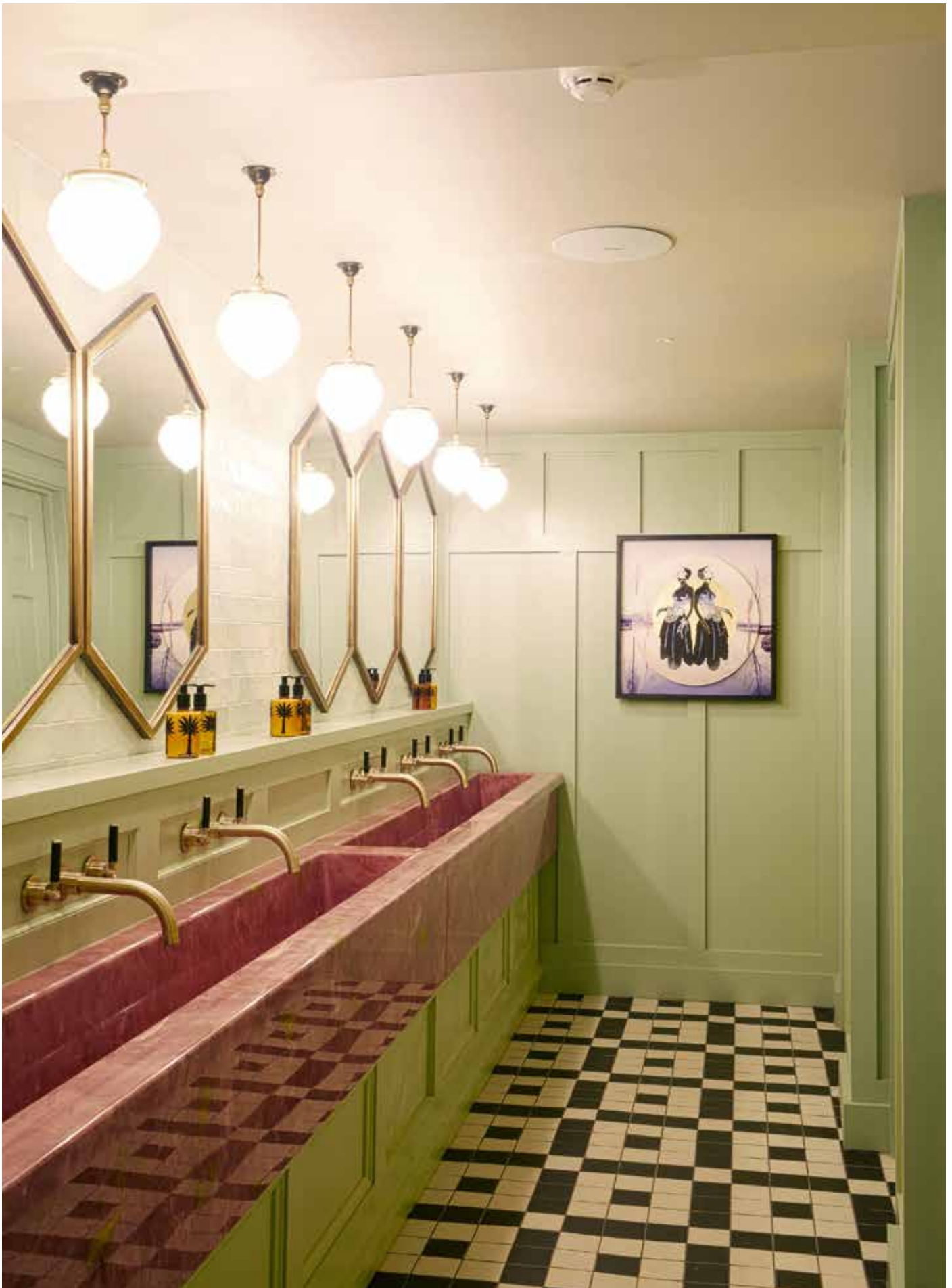


Visit us

We love to share our story with Interior Designers and Architects alike. If you'd like to visit us to see how our marbles are engineered in house and learn more about the Versital product please get in touch. We offer workshop tours, Lunch and learns, installation and CPD training sessions. Contact us at sales@versital.co.uk 01204 380780 .



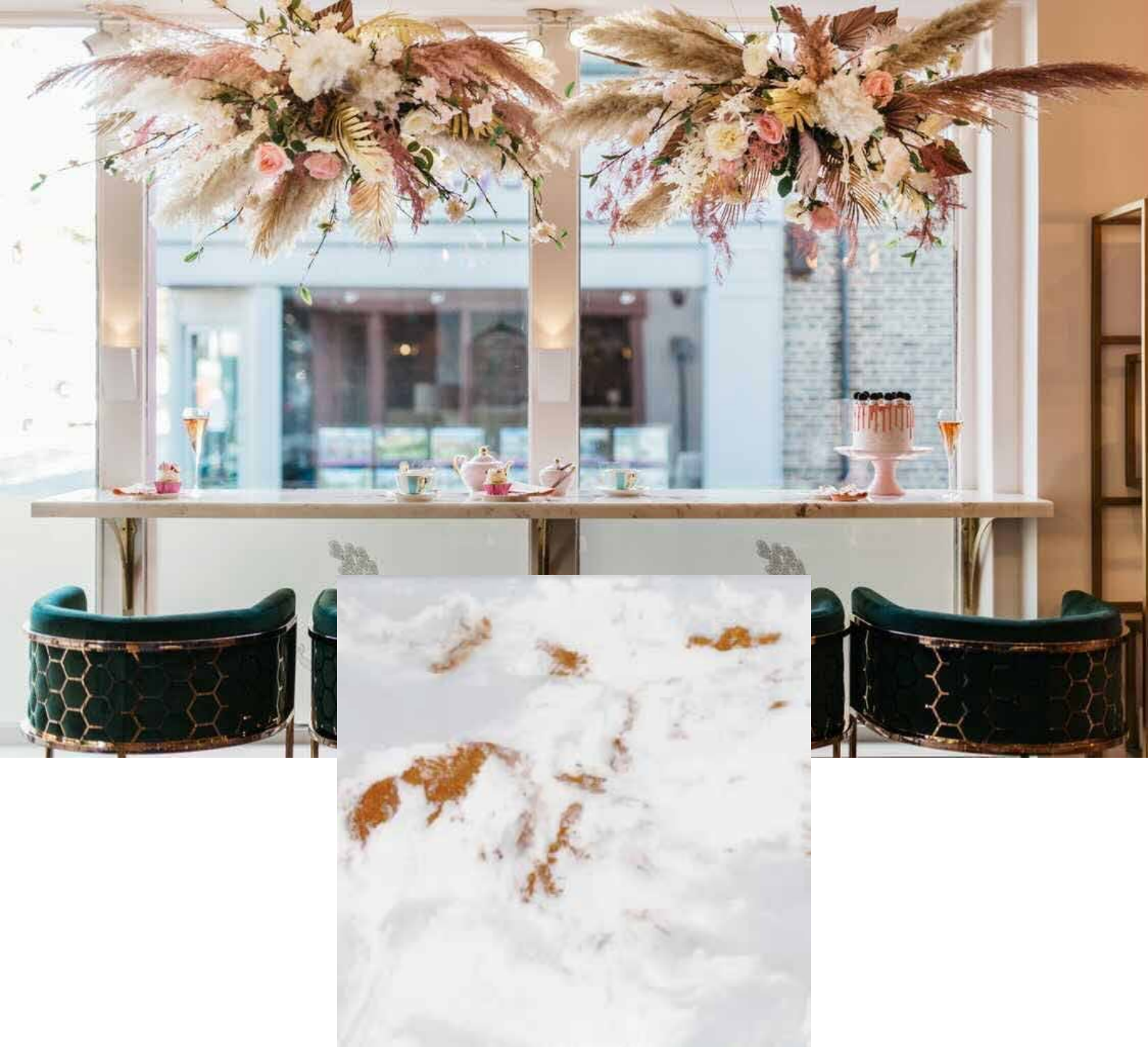
Langley House, Bradford Rd, Bolton BL3 2HF



Engineered by hand in Bolton
The easy way to artistry.

BLOSSOM & WILD





Blossom & Wild

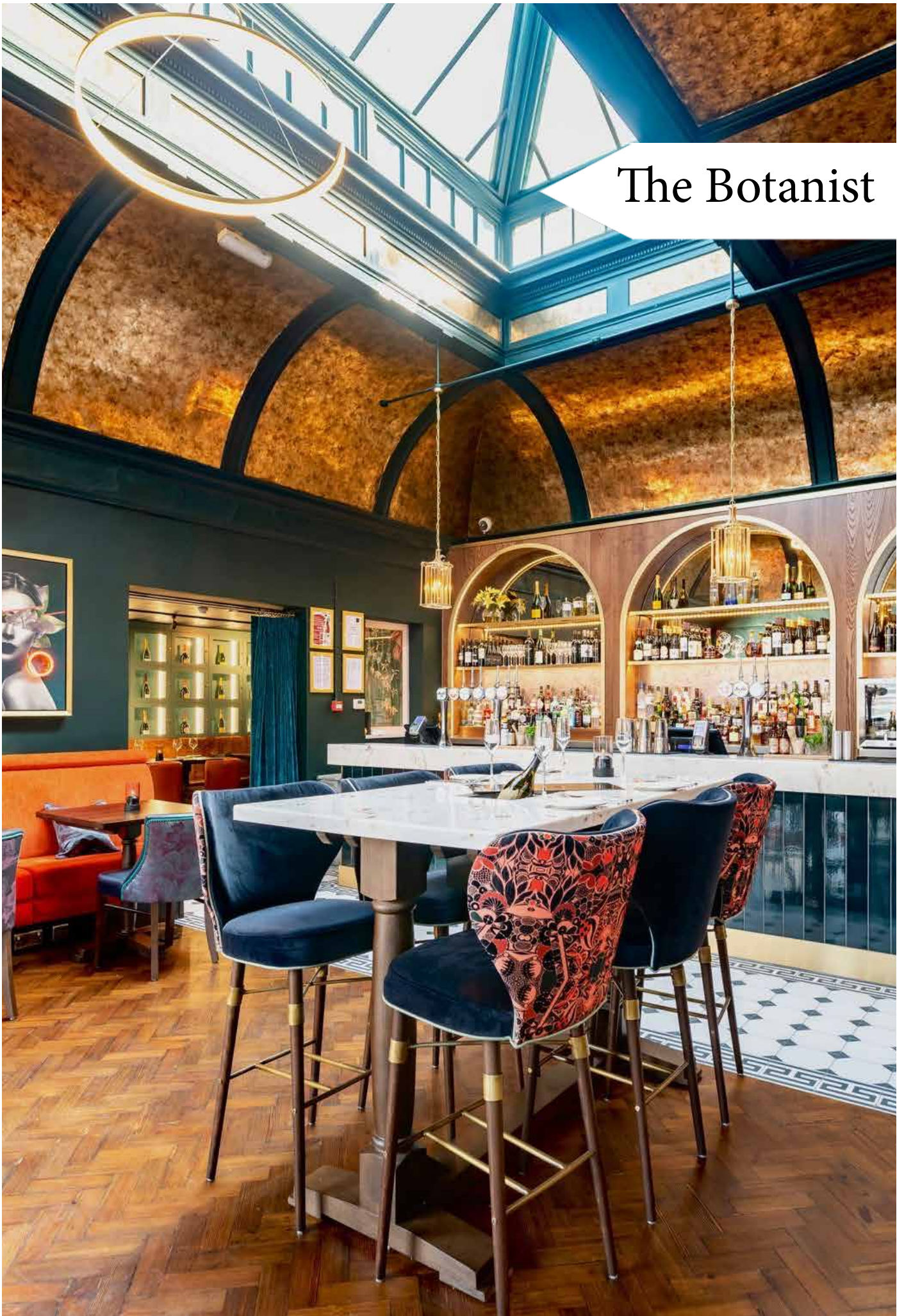
Situated in the Hertfordshire haven of Berkhamsted, Blossom and Wild is a beautiful coffee shop which sits on a picturesque high street where both footfall and competition are high. Standing out with a dazzling interior is absolutely crucial, and Blossom and Wild have certainly raised the bar. This decor adds to the grandeur of the venue without overpowering the bright, inviting walls. For an added touch of glamour, Madison chose the exclusive finish Copper Stratos from the Metallic Marble range. These finishes have the beauty of a realistic marble pattern with an extra element of metallic sparkle in the veining. This finish was the perfect option to complement the rest of the venue's decor.

Project name: Blossom and Wild
Colour: Copper Stratos – metallic marble
Products: Table tops/bar tops/counter
Designer: N/A

Other info: Independent coffee shop – bespoke design we advised and worked with



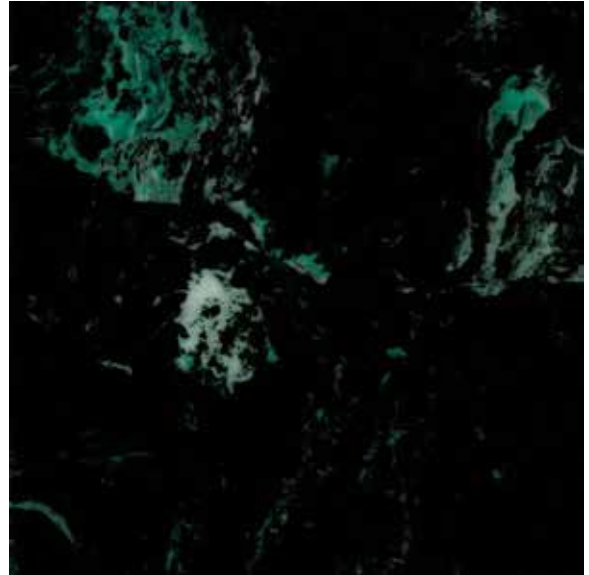
The Botanist



Bristolian Botan(tw)ist

The bar areas includes show stopping poseur tables complete with champagne buckets. Metallic marble 'Gold Stratos' from Versital has been chosen for both the tables tops the bar top to add to the feeling of opulence. Offering a modern twist on a traditional marble, this finish is the perfect backdrop for the vibrant colours and copper touches throughout the venue.





Vanity

Sometimes the gents toilets get a little bit neglected – not so in this scheme. Opting for a darker theme with a rich green marble from Versital in Verde. Not to be outdone the ladies washrooms are a complete contrast to the gents, opting for a lighter more feminine colour theme. A beautifully traditional style marble ‘Royal pavilion’ is used for the vanity tops. Bathrooms are regularly one of the most photographed areas, especially with beautiful Instagram worthy décor and lighting. The perfect place to share a selfie!

Project name: Botanist Bristol
 Colour: Bar top/table tops – Gold Stratos
 Ladies vanity – Royal Pavillion
 Gents Vanity - verde
 Products: Bar tops/table tops/vanities
 Designer: JMDA
 Other info: Bespoke cast champagne buckets in tables.

THE PINE MARTEN







***Pine Marten? or should I say
Fine Marten!***

Gold Stratos and Busy Carrata are a whole MOOD in this JMDA Interior. From the conception of this project, we were involved in the design process, lending our expertise and engineering know-how wherever required. We were able to suggest colour options and supply samples, as well as creating intricate edge designs for specific areas of the build, such as the meet and greet desk and the custom busy carrata bar top. Our marble is a great choice for washrooms, as it is protected by SteriTouch anti-bacterial technology. Furthermore, as it can often be cut on site, it is perfect for unique layouts. Working on the Pine Marten project was a real honour for us at Versital. It was a joy to work alongside the best of British independents from start to finish on renovating this Yorkshire pub.

Project name: The Pine Marten at Harrogate
Mitchells and Butlers
Colour: Meet and greet/bar top - Busy Carrata
Table tops – Busy Carrata
Washroom Vanities – Gold Stratos
Products: Meet and greet/bar tops/table tops/ vanities
Designer: JMDA
Other info: Part of M & B roll out – the High Energy
Mandarin Concept of Premium Country Pubs

Dash Liverpool



Ooh la la - a touch of Paris

The feel of the restaurant is deeply rooted in the Parisian culture of the 70s and 80s. Working with Wroot Design the owners conceived a project with a unique feel. The impressive toned down colour palette is matched with our Arabesque marble to emulate that elegant Parisian feel. Dash restaurant is perfect for the venue – a great mix of classic and modern style when the use of marble finishes from Versital combined with modern lighting and metal details. The colour palette and choice of style really suits the heritage building.

Project name: Dash Liverpool

Colour: Arabesque

Products: Bar top/table tops

Designer: Independent bar/restaurant based in central Liverpool. Very big Insta presence. Big drop detail on bar top – 200mm





Heavenly Desserts



Heaven's waiting

Since 2008, Heavenly Desserts have provided the very finest in delectable sweet treats. We continue to be an innovator and trendsetter in the world of luxury desserts, 'l'art de vivre'. Heavenly Desserts is successfully operated and managed by the directors, Mohammad Imran & Yousif Aslam. It's through their dedication and desire that word of Heavenly Desserts delicious creations quickly spread throughout the UK, allowing them to expand the company both nationally and internationally. Presentation is key. Attention-to-detail, creativity and innovation. Versital worked with Imran directly to help him bring his vision to life with a design led product that was also practical when it came to upkeep and product longevity.

Products supplied: Table tops and meet and greet tops
Colours: Various – varied from site to site
Designer – Independent
Location – currently over 40 locations nationwide expansion ongoing.

THE GEORGE







By George

Amidst the backdrop of lockdowns and restrictions, the design brief to Faber called for escapism, transporting guests to another time and place. Narrative is at the heart of the concept. In envisioning the hotel, love of botanical studies and writing we wrote a story; a love affair, set amongst the atmosphere of Victorian England, between George and Mary. Their journey through life is woven through the fabric of the space; George with his love of travel and engineering; Mary with her love of botanical studies and writing.

The bar area is the perfect example of where design and practicality meet. The beautiful emerald green tiles to the front of the bar are extremely practical and hard wearing. The cultured marble bar top chosen in Sicilian offers all the beauty of a traditional looking marble bar top whilst also being water proof, stain proof and easy to clean. Following the impact of Covid and lockdown these requirements have become even more important when choosing the most suitable surfaces for a project. The washrooms were treated to the same care and attention to design and product specification as everywhere else in this venue. A beautiful soft pink and green

scheme – with wallpaper and beautiful upholstered pink seating.

The scheme was perfectly complemented by the classic beauty of Sicilian white marble from Versital for the vanity tops and splashbacks. Not only does the washroom benefit from the beautiful aesthetics of Versital marble, it of course comes with all the benefits you'd expect from our marbles. Versital is extremely hygienic offering the anti-bacterial protection of Steri-Touch, as well as being waterproof and easy to clean.

Project name: The George at Buckden

Colour: Sicilian

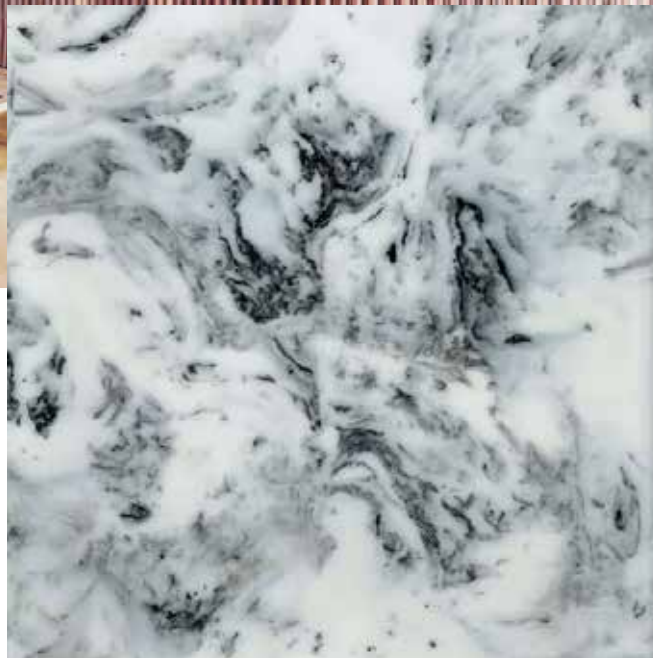
Products: Bar top/washroom vanities

Designer: Faber

Other info: Bull nose edge detail – profile 1.
Classic marble finish – very simple pattern that works well with a modern design

CENTRAL OVEN & SHAKER



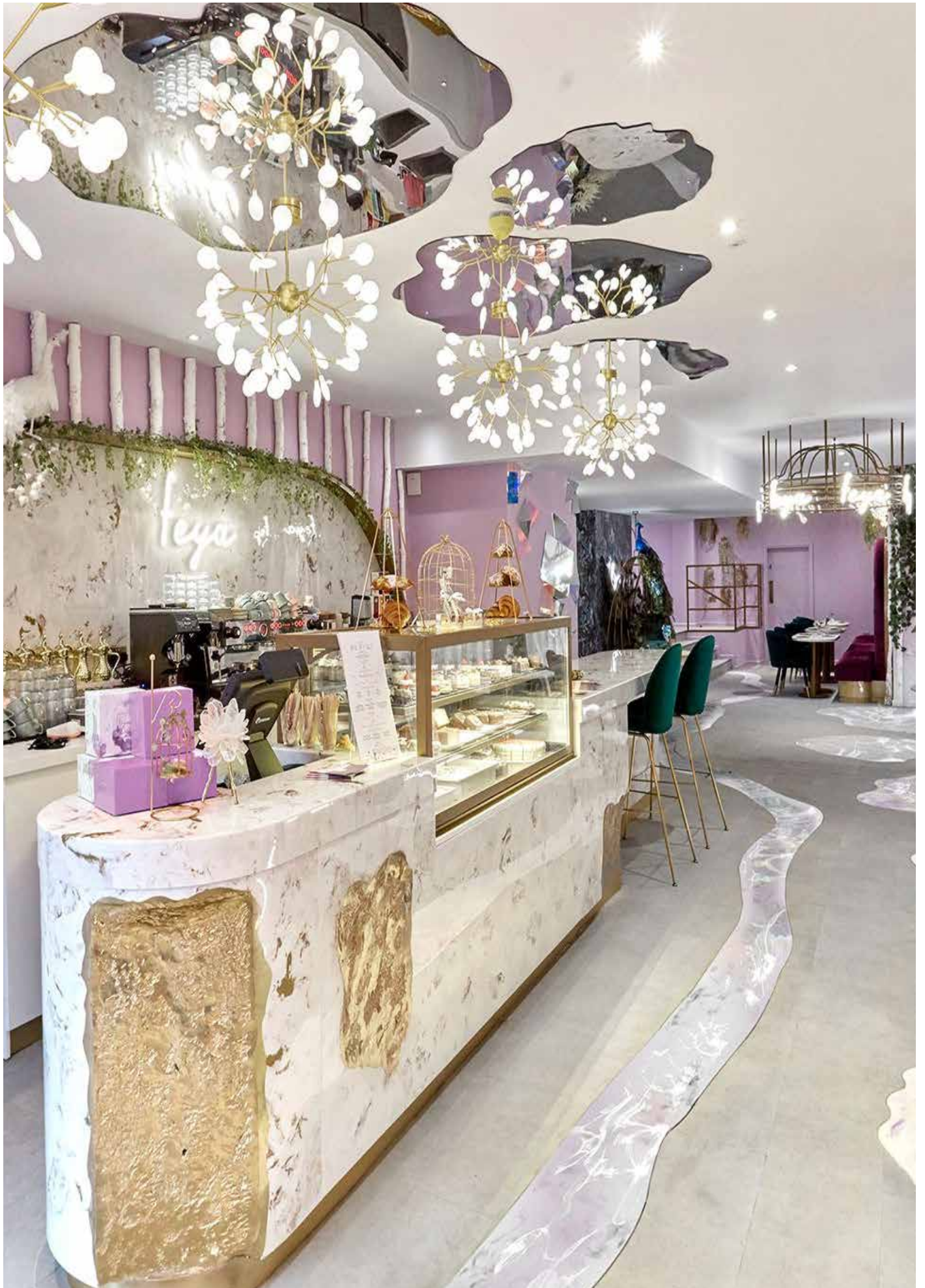


Collective design Shake it up

Versital's bespoke surfaces were supplied for Central's bar tops and front panels in a white faux marble finish. Versital products are designed to beautifully replicate the luxurious appearance and intricate veining of the natural material, while providing added benefits. Whilst natural marble is prone to erosion and staining, making it an impractical material for design, Versital has provided a solution that maintains the beauty of marble without any of the problems it is commonly associated with. The brand's 100% non-porous surfaces are completely bespoke, making them suitable for an array of applications in the domestic and commercial sectors.

Project name: Central Oven and Shaker
Colour: Busy Carrata
Products: Bar tops/Table tops
Designer: Collective Design
Other info: Under edge detail addition – top profile 1 with Straight drop

FEYA



That FormRoom flair

Feya approached FormRoom to create a design like no other. FormRoom have a reputation for creating the highest quality Hospitality projects with flair. It was especially important to create those 'Insta – worthy' moments for visitors that have become so important in hospitality. FormRoom have a reputation for fabulous designs and we were delighted when we were approached and our exclusive 'Metallic Marble' was specified for the main feature marble counter area and table tops. Being cast, were able to shape the reception front to a curve. The table tops match the rest of the design and bring the whole scheme together

Project name: Feya Knightsbridge

Colour: Gold Stratos – Metallic marble

Products: Coffee counter/table tops

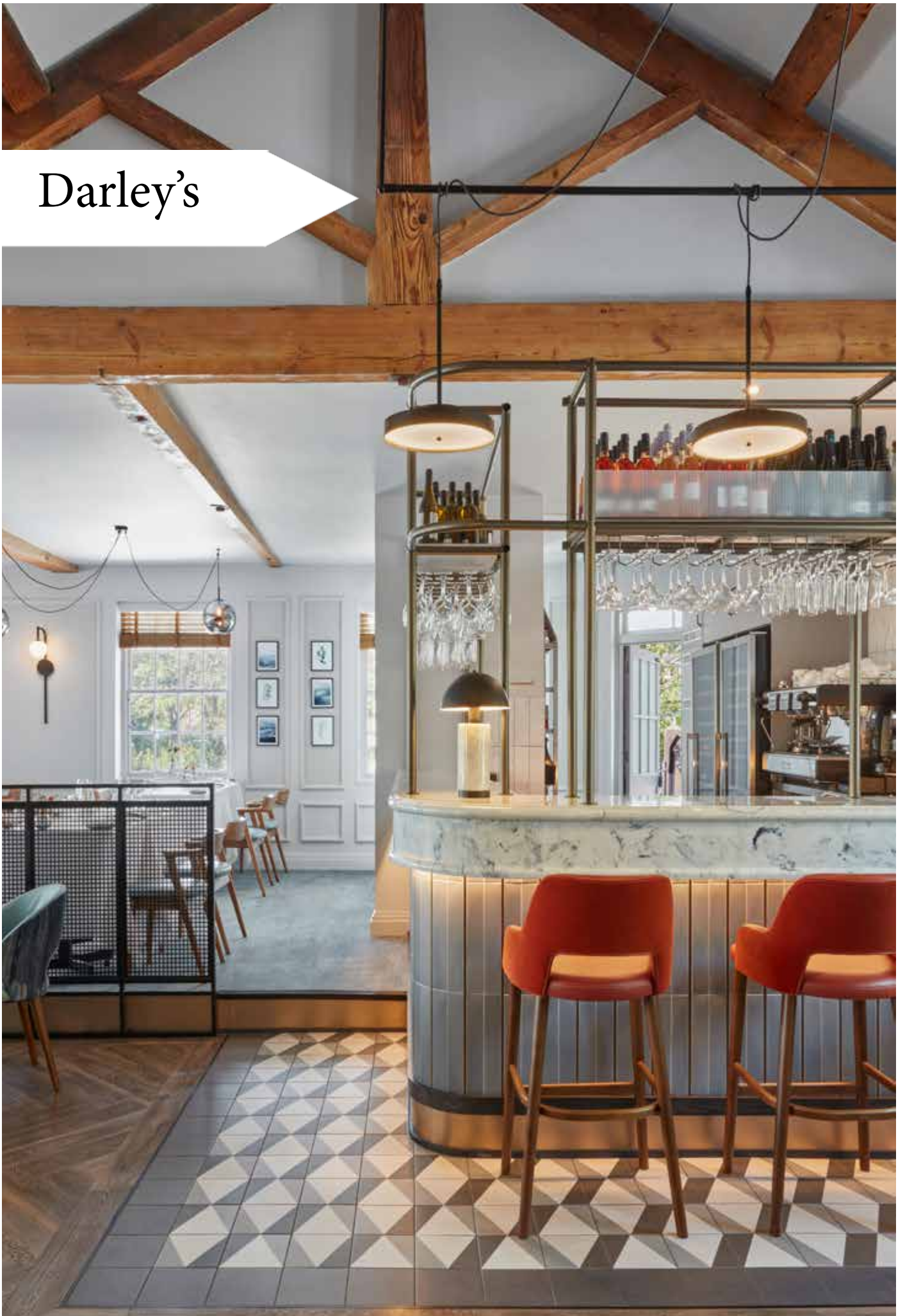
Designer: Installed by Dawnvale

Other info: Bespoke carcass for coffee counter clad by us. Instagram fave





Darley's





Dreaming of Darley's

It is always a pleasure to be involved with Faber, Darley's was no different. This project seamlessly combine's an updated modern feel whilst being true to the history of the building and it's surroundings. Darleys in Derbyshire is an example of a restaurant that has done this to perfection. Not only does Darleys benefit from the beautiful aesthetics of Versital marble, it of course comes with all the benefits you'd expect from our marbles. Versital is extremely hygienic offering the anti-bacterial protection of SteriTouch, as well as being waterproof and easy to clean. we couldn't be happier with the outcome and have even added it to the range dubbing it the 'Darley drop'.

Project name: Darleys Derby

Colour: Arabesque

Products: Bar top

Designer: Faber

Other info: Under edge detail addition – top profile 1 bullnose with Double D drop





MANUKA





Sweet like honey

Named after the honey used by singers to treat their throat, the bar has a another connection to the music industry with the founder being the drummer Ben Thompson from Two Door Cinema Club. Located in the heart of West Sussex. Designed by the award winning 3 stories design celebrating Miami Beach vibes and the “golden Hour”, transporting you into a hedonistic, peach hues paradise.

“...be transported away from the streets of Worthing and into a hedonistic, peach hues, oasis. For Manuka we created an intimate but bold interior scheme in harmony with a warm, playful new brand identity. Built on a graphic linear gradient, reflective of the sun

going down... and the party starting. Opting for a warm sunset sky theme with pinks and slashes vibrant red with cloud swirl marble from Versital in Rock N Rose depicting the last embers of daylight as the world turns to dark and the night owls come out to play.

Project name: Manuka bar and restaurant
Colour: Rock N Rose
Products: Table top and Bar Top
Designer: 3Stories design



THE RED LION



The Red Lion roars again

In any hospitality venue, the bar should be the centrepiece. It is the place where your customers spend the most time, and if you can make the walk to the bar an enjoyable experience, then you'll have people staying longer and spending more. Bar design is one of the ways that you can make that walk better – by giving it a show stopping destination. You can also change the feel of your venue; the Red Lion in Oxford has gone from a country pub to a modern bar and restaurant by redesigning the interior. It is not only the design which was unique to the venue – the marble “Busy Carrata” was actually created in collaboration with JMDA especially for this project. It was so well received that it has now become a part of the permanent collection.

Project name: The Red Lion - Mitchells and Butlers

Colour: Busy Carrata

Products: Bar top/meet and greet/vanity tops

Designer: JMDA

Other info: Deep drop edge to bar top.

Busy Carrata was created in partnership with the JMDA for this project before being added to the main collection





CUT & CRAFT





Masters of craft

Located in the victorian quarter of Leeds this iconic site is dripping with history and opulence. Jewelled tones are seen throughout to create style and substance to the steak house offering. Veneered timbers are paired with illuminated natural stones for a sense of masculinity, whilst delicate glazing and curvaceous booth seating create a feminine balance. With a show stopping central bar and unique champagne bar to the first floor, this site is charismatic, charming, and enviable in style. Show stopping washrooms – overall project winning best restaurant and bar at the Northern Design Awards. Using the Versital art deco inspired edge detail profile 1 with waterfall reverse edge detail.

Project name: Cut & Craft
Colour: Rock and Rose
Products: Vanity Tops
Designer: Studio Two

Other info: Profile 1 with reverse waterfall under edge detail. Cast to template for undermounted basins



MY TOWNHOUSE



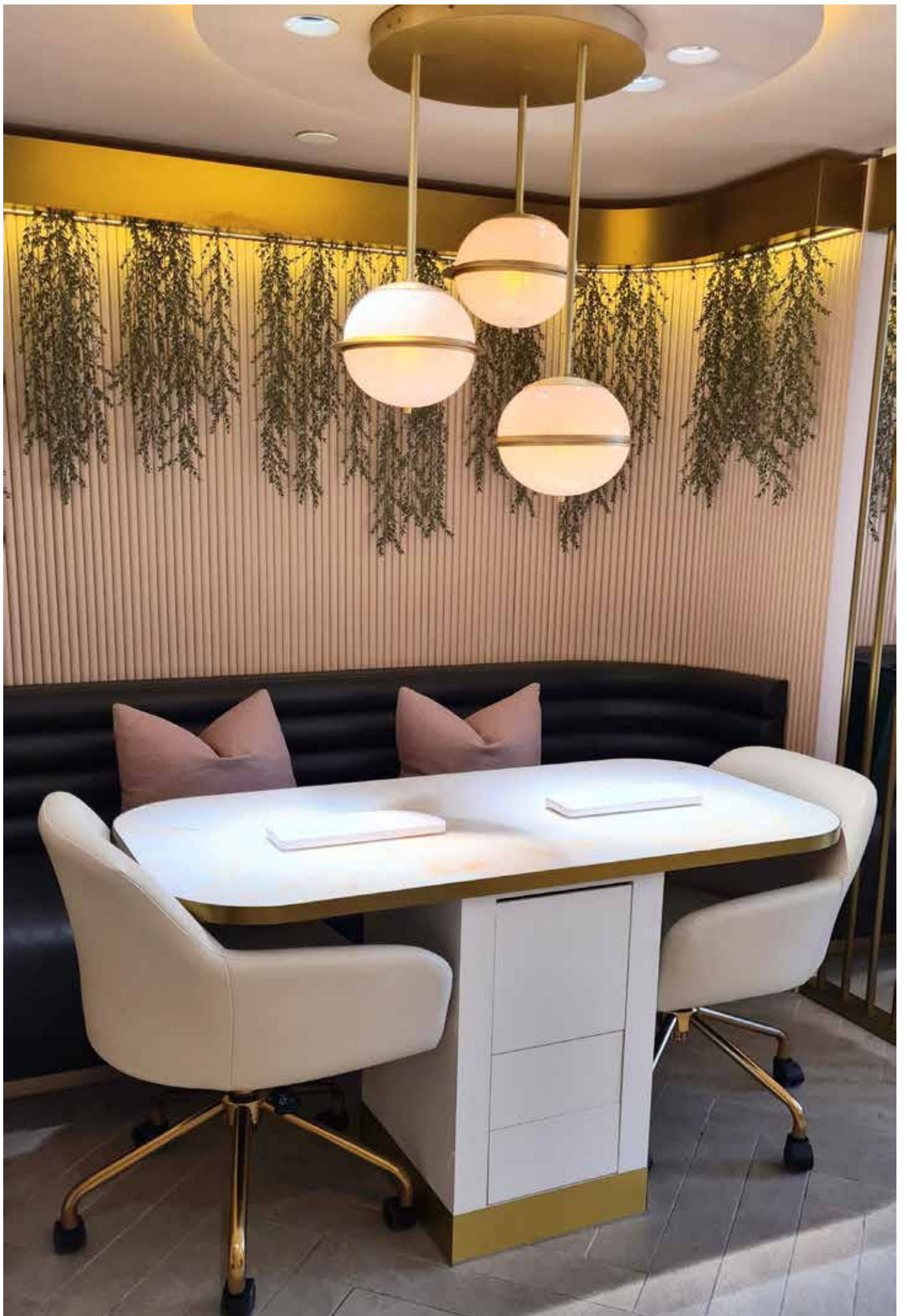
Self care and Glow up's

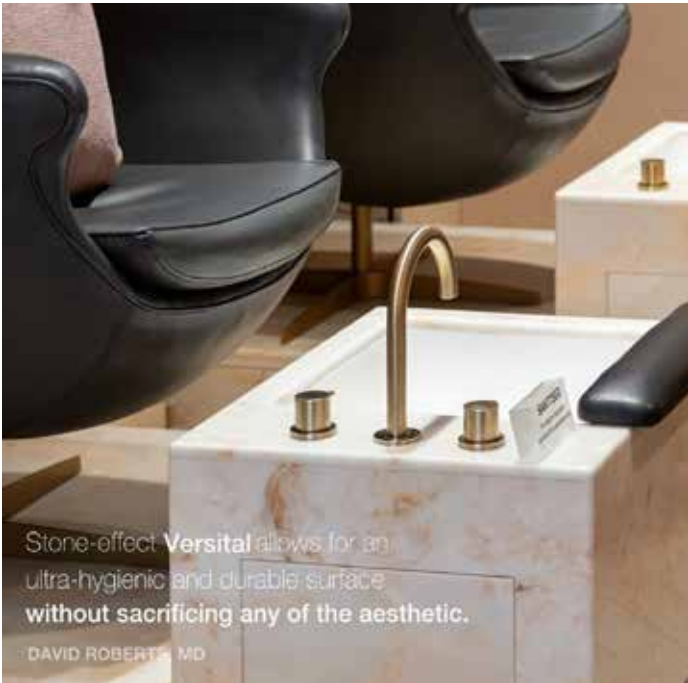
Dubbed 'the most luxurious nail salon in the world', Thanks in a large part to the custom marble. My Townhouse features private mani and pedi booths, ultra high end interiors, and an eyecatching marble manicure bar - and thats just the aesthetics. The salon features the classic onyx marble from Versital 'Autumn Onyx', which combines the modern design with a classic marble look. The custom marble itself – a cream and white colour with a burnt orange vein.

supplied by Versital for the nail bar tops, cast panels and intricate end details. This salon is a model of the perfect venue to delight clients and what can be achieved with a well-thought-through design. Not only does the Townhouse benefit from the beautiful aesthetics of Versital marble, it of course comes with all the benefits you'd expect from all our marbles. Versital is extremely hygienic offering the anti-bacterial protection of SteriTouch, as well as being waterproof and easy to clean.

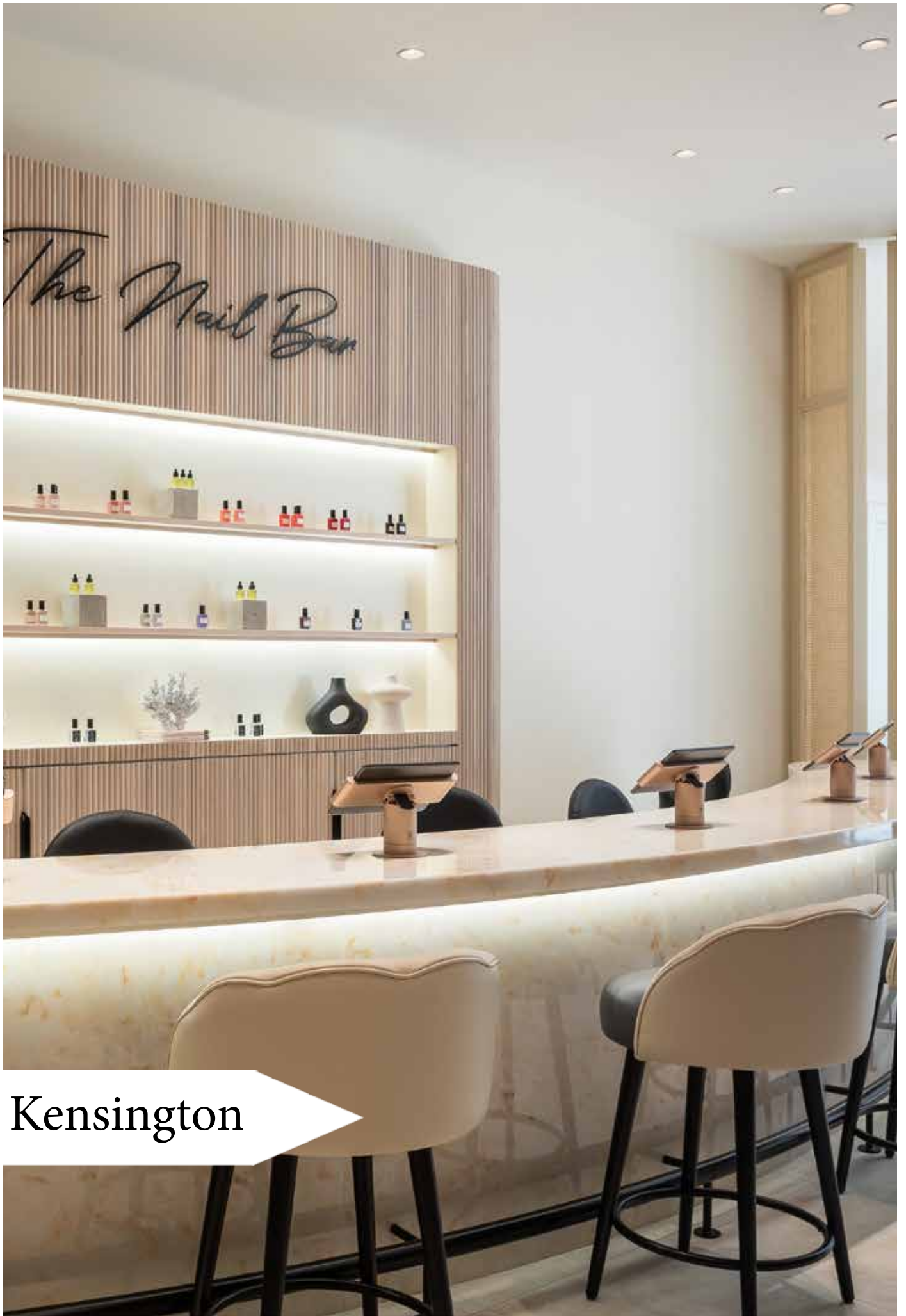


Harrods





Project name: My Townhouse Harrods – 1st site
Colour: Autumn Onyx
Products: Variety of surfaces – tops, panels, cladding,
nail bar, curved panels
Designer: Form Room
Other info: Roll out of high end nail salons starting in
Harrods. Followed by sites at Milton Keynes at H
Beauty part of the new Harrods beauty brand roll out
and Kensington High street. Featured in Forbes
Magazine and premier hospitality. Nail Salon of the year
2021 and 2022 at the Scratch awards

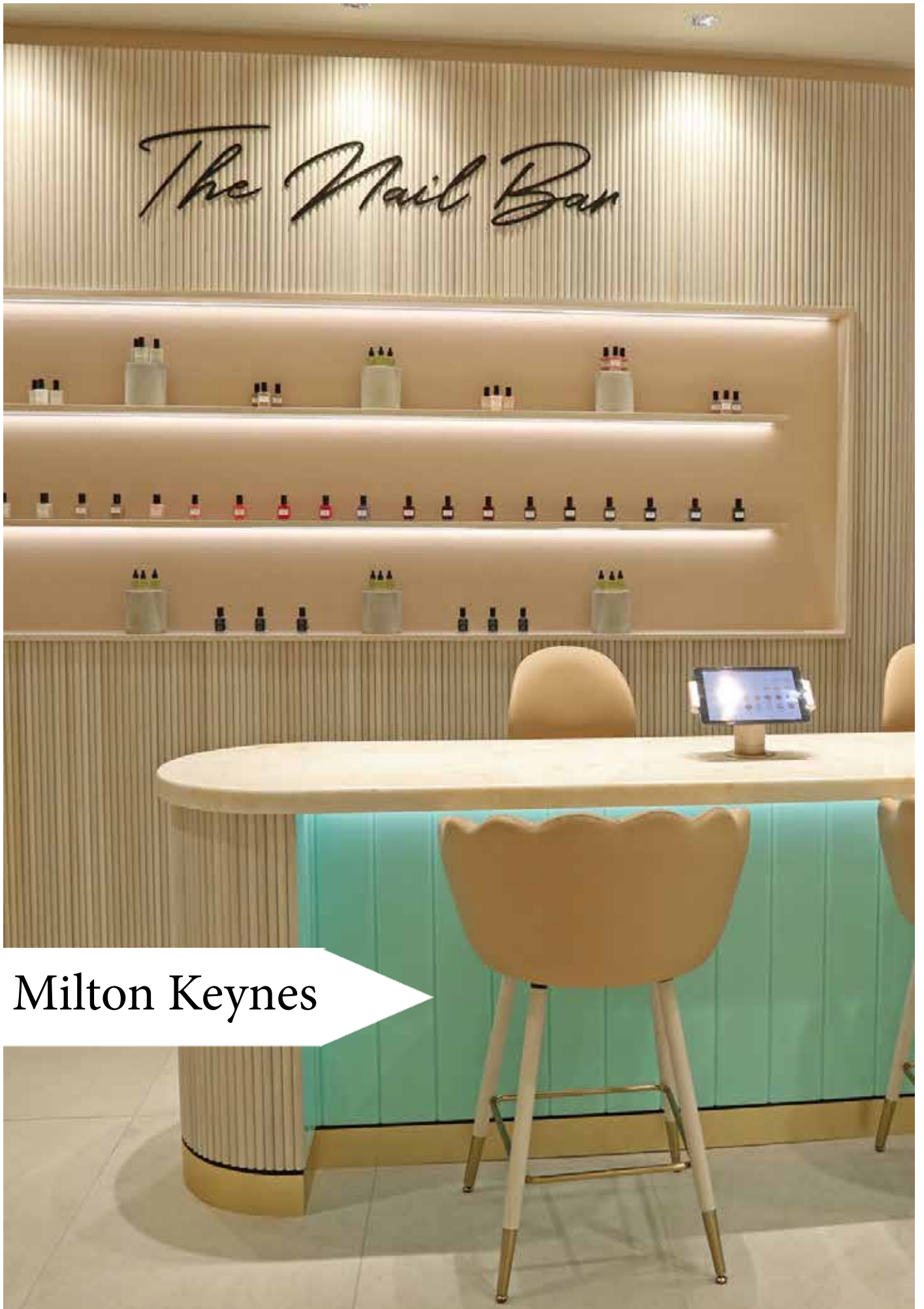


Kensington

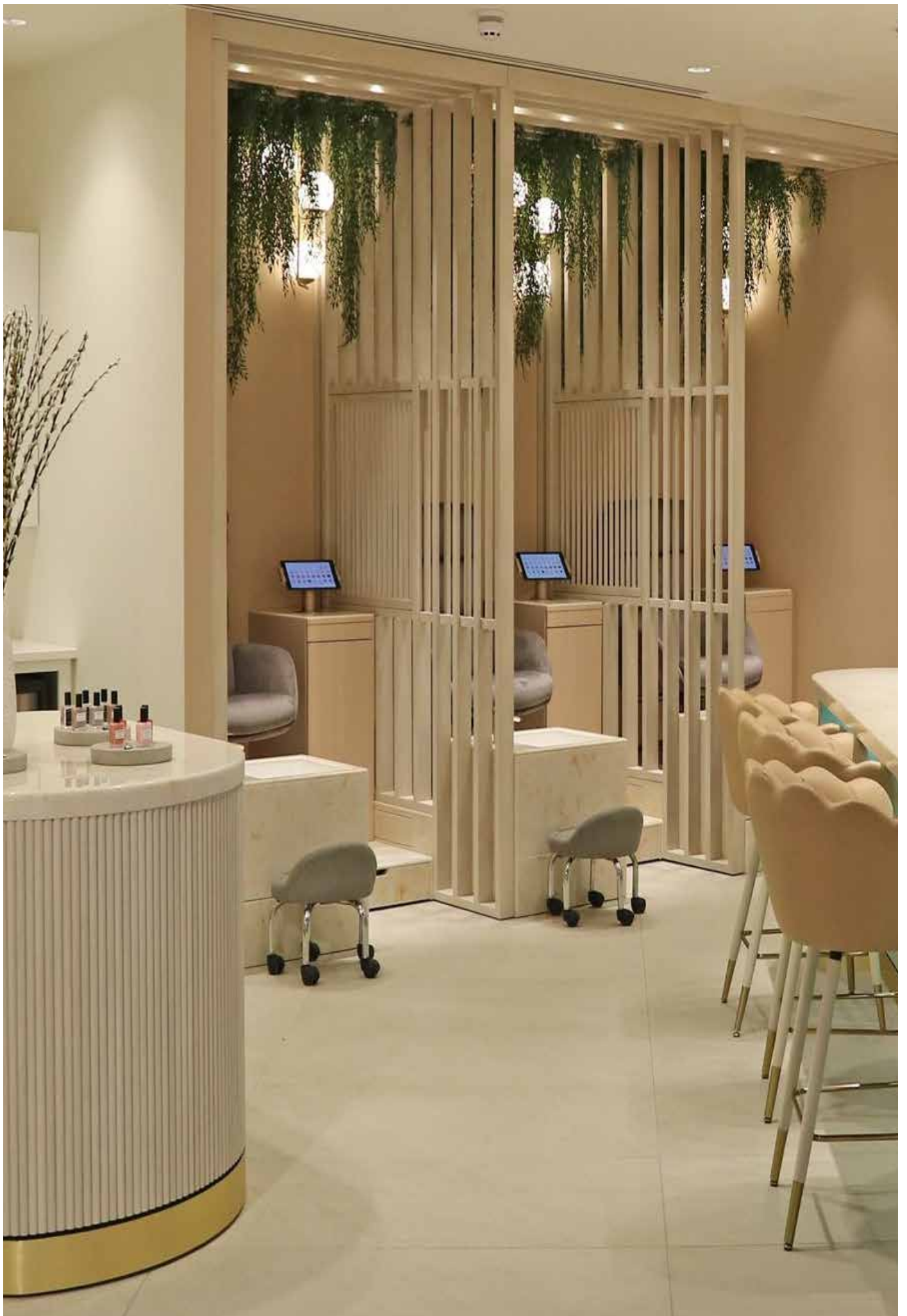








Milton Keynes



TOWNHOUSE

The Nail Bar

CHECK IN
HERE



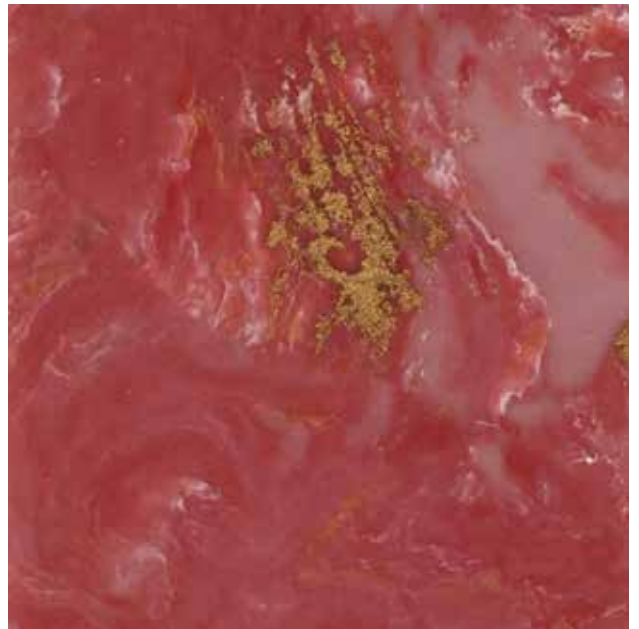


THE WASHROOM EDIT

Washrooms historically have been a neglected area of hospitality projects. No longer is that the case as you can see with these little beauties. Be inspired for your next project.



The Rockwater Hove Gents – Designer RT San Colour: Moss Green



The Rockwater Hove Ladies – Designer RT San Colour: Koi



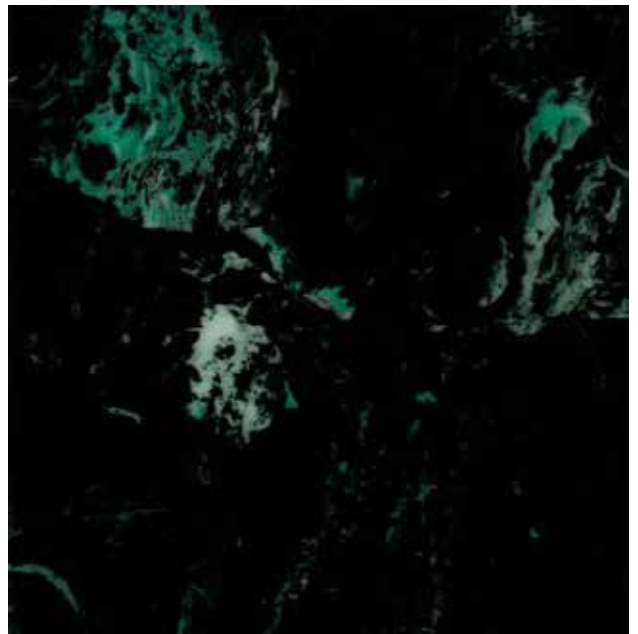
The George Ladies – Designer Faber Colour: Scilian



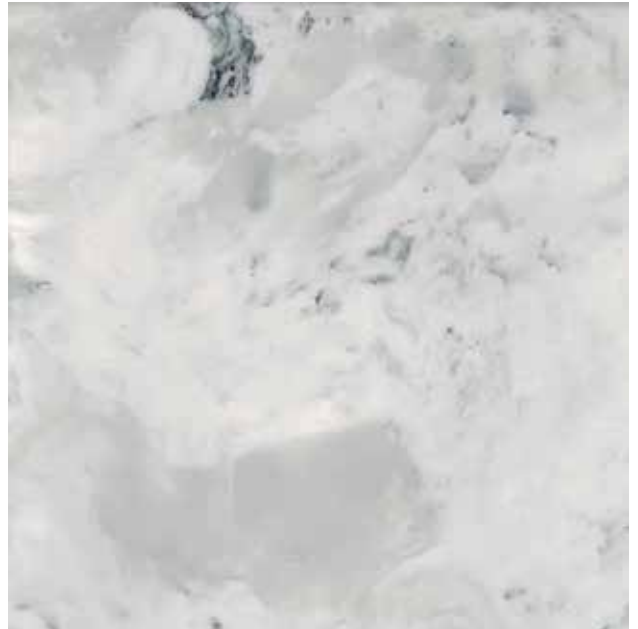
The George Mens – Designer Faber Colour: Scicilian



The Botanist Bristol Ladies – Designer JMDA Colour: Royal Pavillion



The Botanist Bristol Mens – Designer JMDA Colour: Verde



Dukes Head - Crawley. Designer: JMDA Colour: Arabesque



The Bell Designer JMDA Colour: Brown



Makeup Area Colour: Indigo



Ladies Washroom Colour: Moss Green



The Red Lion Designer JMDA Colour: Busy Carrara



Pine Marten Designer: JMDA Colour: Gold Stratos





A man in a light-colored polo shirt is leaning on a counter in a kitchen. The kitchen features patterned wallpaper, a large arched window with a grid pattern, and two modern pendant lights with a leaf-like design. The scene is overlaid with a semi-transparent white layer containing text.

TECH'S & ARCHIVE

Lead us not unto tempation, but deliver us to Versital.

To view the full colour collections and order samples click the link below. You can also see more images of the projects featured past and present...

<https://versital.co.uk/colours-of-versital/>

Versital 

Bar Tops & Counter Tops

Hospitality, Leisure
& Domestic

☎ 01204 380780

✉ sales@versital.co.uk

www.versital.co.uk



Versital is the **ideal material** for bar tops and countertops for both commercial and domestic buildings.

Specifications

- High quality solid cast stone resin material. Also known as cultured marble.
- Handmade to order in the UK.
- Tops are 20mm thick plus edge detail. Edge details are typically 40mm but can be specified deeper up to 200mm.
- Choice of edge profiles available. Please refer to technical diagrams.
- Manufactured to client's specifications.
- Bar tops can be made to template to suit your existing carcass, allowing you to fit the bar tops on top of the existing tops, or in place of them when removed.
- Finished with a protective polyester gel coat. High gloss finish.
- The protective gel coat offers a fully stain proof material as an ideal alternative to real marble.
- Available in over 90 colour options, including true to life marble and granite, as well as high gloss sparkle options and the exclusive metallic marbles.
- Matching and complementing panels available from the same Versital range.

Properties



STAIN PROOF

Extensively tested to guarantee a completely stain proof and waterproof surface.



UV RESISTANT

Surfaces withstand fade and damage caused by exposure to sunlight and UV rays.



CLASS 0 FIRE RATING

Conforms to the highest level of British standards and building regulations.



FULLY BESPOKE

All Versital products are manufactured to order to supplied specifications.



DURABLE & HYGIENIC

The innate property of Versital and its protective gel coat offers exceptional durability and hygiene.



UNPARALLELED COLOURS

The largest range of true to life and exclusive colours on the market.

Edge Profiles



Other edge details are available on request.

Range/Sizes



up to 3000 max without jointing
mm

Versital, Victoria Mill, Bradford Road, Bolton BL3 2HF

 @VersitalUK

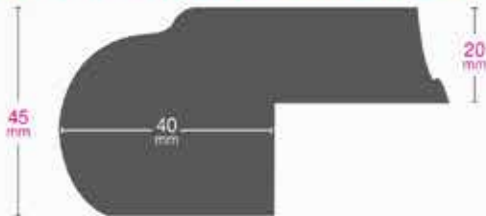
 MADE IN BRITAIN

 BOFA
member

Top Options Choose from 2 top options and four additional under edge details

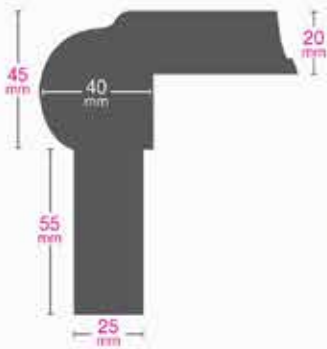
A Top Profile 1 - Bullnose Edge

NOT TO SCALE

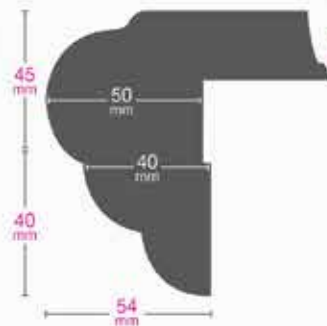


Under edge detail additions

Straight drop

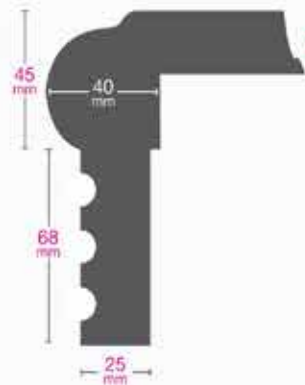


Reverse Waterfall

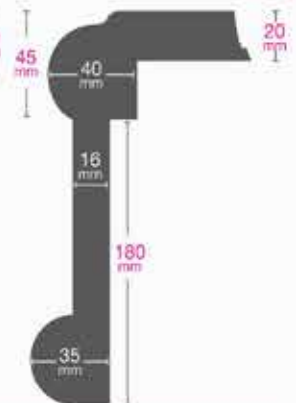


* Available on curves

Fluted Drop



Double D Drop

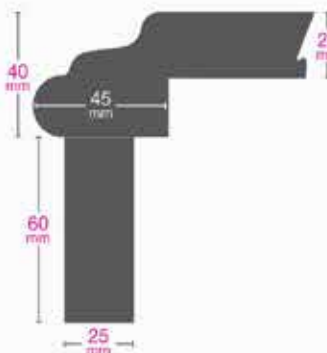


B Top Profile 2 - Triple Edge

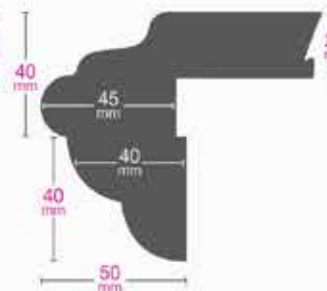


Under edge detail additions

Straight drop

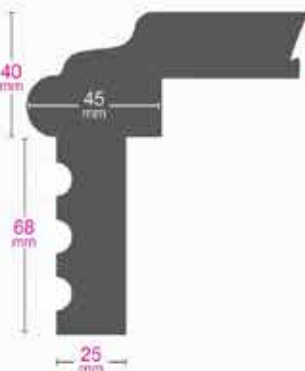


Reverse Waterfall

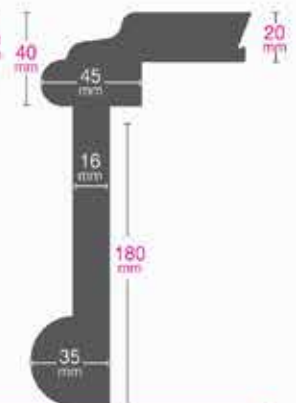


* Available on curves

Fluted Drop



Double D Drop



Vanity Tops with Basins

Integral and undermounted

☎ 01204 380780

✉ sales@versital.co.uk

www.versital.co.uk



Versital vanity tops with basins are the **ideal option** for both commercial and domestic applications.

Specifications

- High quality solid cast stone resin material. Also known as cultured marble.
- Handmade to order in the UK.
- Vanity tops are 20mm thick plus edge detail. Edge details are typically 40mm but can be specified deeper up to 200mm.
- Choice of edge profiles available. Please refer to technical diagrams.
- Manufactured to client's specifications.
- Vanity tops can be made to template to suit preferred cabinetry.
- Range of integral and undermounted ceramic basins available - please refer to technical diagrams.
- Polished cast outs for undermounted basins for a beautiful seamless feel.
- Finished with a protective polyester gel coat. High gloss finish.
- The protective gel coat offers a fully stainproof material as an ideal alternative to real marble.
- Available in over 90 colour options, including true to life marble and granite, as well as high gloss sparkle options and the exclusive metallic marbles.

Properties



STAINPROOF

Extensively tested to guarantee a completely stainproof and waterproof surface.



WATERPROOF

Surfaces are 100% waterproof and made in one piece - no seams or joints for water to escape.



CLASS 0 FIRE RATING

Conforms to the highest level of British standards and building regulations.



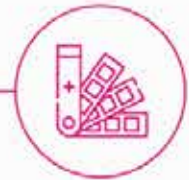
FULLY BESPOKE

All Versital products are manufactured to order to supplied specifications.



DURABLE & HYGIENIC

The innate property of Versital and its protective gel coat offers exceptional durability and hygiene.



UNPARALLELED COLOURS

The largest range of true to life and exclusive colours on the market.

Edge Profiles



Other edge details are available on request

Range/Sizes



Minimum Top Size to Accommodate Integral Basins

Note:

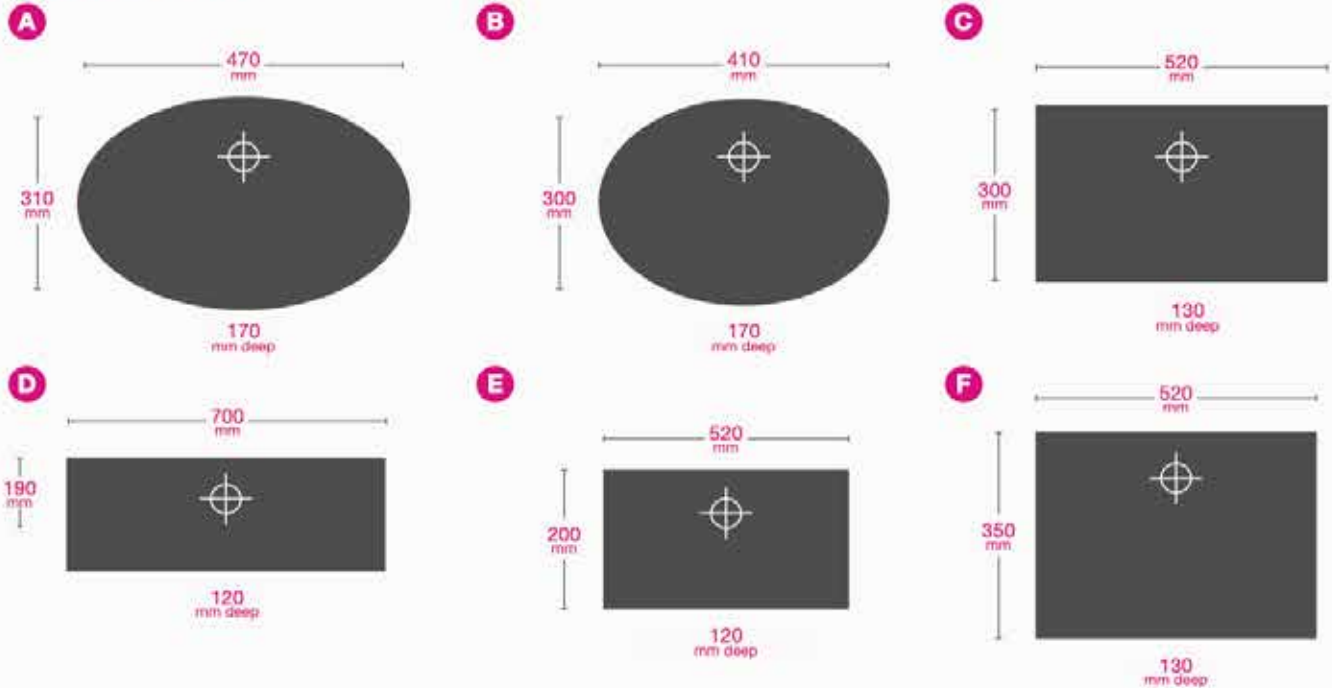
Basin Options

NOT TO SCALE

- A** 620x500mm **C** 670x490mm **E** 670x390mm
B 560x490mm **D** 850x380mm **F** 670x540mm

Top size:
Length x Width

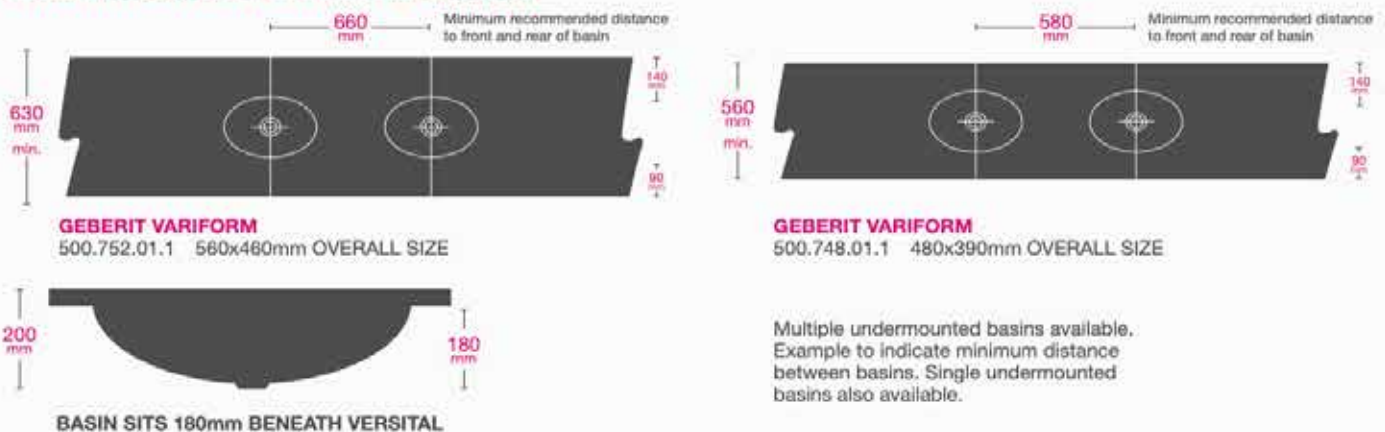
Integral Basins



Cross Section



Undermounted Ceramic Basins





We can't wait to hear from you and help you with your next project

Get in touch for product advice and estimates

sales@versital.co.uk

T: 01204 380780

www.versital.co.uk

